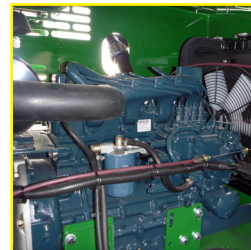


WS3250 HIGH CAPACITY STOCKPILING

The McCloskey WS3250 is an efficient, high production stacker. At less than 2.5m wide, the WS3250 is easily transported from site to site and within a site.

The 32" wide 50' conveyor is able to handle large amounts of product, stockpiling it using McCloskey's field-proven axle setback design. By setting the axle back and adding a counterweight, the stacker can create large stockpiles without burying its own wheels. Radial Axes add to stockpiling abilities by allowing the WS3250 to make sweeping stockpiles in a 180 degree radius.

The WS3250 is durable, compact and more than capable of handling high volume output in a variety of applications.



Large Engine Bay
The power unit is easily accessible for maintenance, minimizing downtime.



Large hopper
The large hopper handles high volumes of product for maximum stockpiling efficiency.



Enclosed Conveyor Sides
For safety and efficiency, the conveyor sides are enclosed with flashing.



32" Belt
The combination of a 32" belt with 50' length allows the WS3250 to efficiently stockpile product.



Counterweight
McCloskey stackers feature a setback axle with a counterweight to maximize stockpiling abilities.

WS3250

Engine: Diesel or Electric
Transport Height: 9' 11" (3.04m)
Transport Length: 39' 4" (11.99m)
Transport Width: 8' 2" (2.49m)
Stockpiling Height: 20' 11" (6.36m)
Weight: 9,020 lbs (4,100 kg)

WS3250
HIGH CAPACITY
STOCKPILING

www.mccloskeyinternational.com

McCloskey International reserves the right to make changes to the information and design of the machines on this brochure without reservation and notification to the users. Information at time of print considered accurate – McCloskey International assumes no liability resulting from errors or omissions in this document.